



# INSTALLATION MANUAL

## SK-4261 Arnett New Front Coil-Over Strut Various GM Trucks (K2xx, w/MagneRide)



INSTALLATION VIDEO  
(see page 3 disclaimer)  
<https://bit.ly/3MzQjtp>



**Engineered to Ride, Built to Last<sup>®</sup>**

# CONGRATULATIONS ON YOUR PURCHASE OF AN ARNOTT® SUSPENSION PRODUCT

WE AT ARNOTT LLC ARE PROUD TO OFFER A HIGH QUALITY PRODUCT WITH ALL THE TECHNICAL SUPPORT YOU NEED. THANK YOU FOR YOUR CONFIDENCE IN US AND OUR PRODUCT.

Proper installation is essential to experience and appreciate the benefits of this system. Please take a moment to review these installation instructions before you begin to install these components on your vehicle. The removal and installation of air suspension products should only be performed by a fully qualified and certified automotive professional.

It is equally important to be aware of all necessary safety measures while installing your new Air Suspension System. This includes proper lifting and immobilizing of the vehicle and isolation of any stored energy to prevent personal injury or property damage.

## GENERAL INFORMATION

Reading this manual signifies your agreement to the terms of the general release, waiver of liability, and hold harmless agreement, the full text of which is available at [www.arnottsuspension.com](http://www.arnottsuspension.com) and [www.arnotteurope.com](http://www.arnotteurope.com).



### WARNING:

The air suspension system is under pressure (up to 10 bar, or 150 lbf/in). Verify pressure has been relieved and disconnect power to the air suspension system prior to disassembly. Do not allow dirt or grease to enter the system. Always wear standard hand, ear, and eye protection when servicing the air suspension system.

- Not to be stored below 5°F (-15°C) and above 122°F (50°C).
- Avoid damage to air lines and cables.
- Removal and installation is only to be performed by fully qualified personnel.
- Use car manufacturer's diagnostic software.

### CAUTION:

Damage to the vehicle and air suspension system can be incurred if work is carried out in a manner other than specified in the instructions or in a different sequence.

To avoid the possibility of short circuits while working with electric components consult your owner's manual on how to disconnect your battery.

Consult your vehicle owner's manual, service manual, or car dealer for the correct jacking points on your vehicle and for additional care, safety and maintenance instructions. Under no circumstances should any work be completed underneath the vehicle if it is not adequately supported, as serious injuries and death can occur.

For vehicles with a "Closed Air Supply System," replacement of components requires proper adherence to procedures set forth within OE servicing literature. Failure to comply with the OE prescribed procedures can result in component damage and/or failure.

## DISCLAIMER:

The product shown in the installation steps below or in the installation video may look different than the part you are installing. The installation steps are the same, and all notices and warnings should be adhered to in the same manner.

## **AVOID WARNING LIGHTS**

**QUALIFIED MECHANIC MUST PERFORM TRIM HEIGHT RELEARN PROCEDURE**

## COIL-OVER STRUT REMOVAL

1. Lift the vehicle.
2. Remove the applicable front wheel. (Figure 1)



FIGURE 1

3. Unroute and unplug the electrical connection at the top of the strut. (Figures 2, 3)



**WARNING:**

Do not pull directly on the wires. Move the harness out of the way to avoid pinching it.



FIGURE 2



FIGURE 3

4. Remove the three (3) top mount nuts. (Figures 4, 5)



FIGURE 4



FIGURE 5

5. Remove the two (2) bottom mount bolts. (Figure 6)

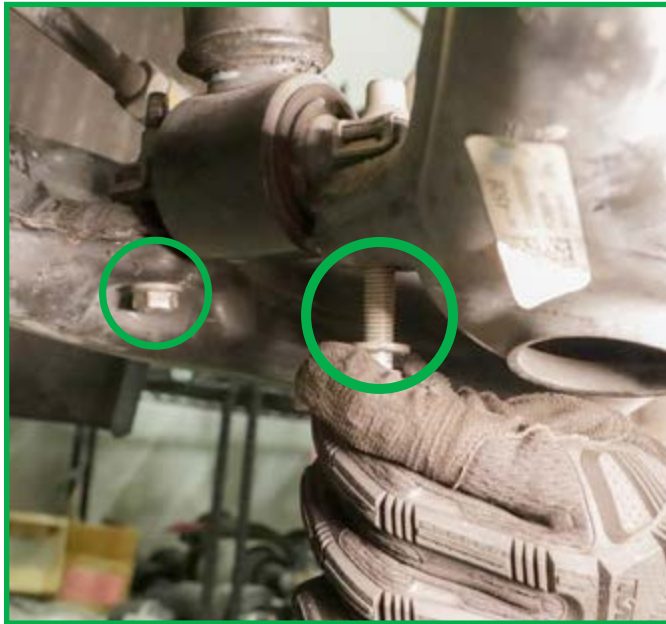


FIGURE 6

6. Remove the coil-over strut from the vehicle. (Figure 7)



FIGURE 7

7. Removal complete.

## DISCLAIMER:

The product shown in the installation steps below or in the installation video may look different than the part you are installing. The installation steps are the same, and all notices and warnings should be adhered to in the same manner.

## COIL-OVER STRUT INSTALLATION



### WARNING:

Tighten all nuts and bolts to the manufacturer's specifications during the installation process.

1. Position the new Arnott coil-over strut into the vehicle from below (Figure 8). Guide the studs through the top mount and align the lower mounting points with the knuckle.



FIGURE 8

2. Install the three (3) new provided top mount nuts by hand to hold the strut in place. Tighten them snug, but do not torque fully yet. (Figure 9)



FIGURE 9

3. Install the two (2) new provided bottom mount bolts. (Figure 10)

**NOTE:** Start the hardware by hand to avoid cross-threading.



FIGURE 10

4. Torque the top mount nuts and the bottom mount bolts to the manufacturer's specifications.
5. Reroute and plug the electrical connection. (Figures 11, 12)



**WARNING:**

Ensure the connector is fully seated and locked. A loose connection can trigger suspension warning lights.



FIGURE 11



FIGURE 12

6. Reinstall the applicable front wheel.
7. Lower the vehicle.
8. Installation complete.

**AVOID WARNING LIGHTS**  
**QUALIFIED MECHANIC MUST PERFORM TRIM HEIGHT RELEARN PROCEDURE**

# Arnott®

## Suspension Products

### Arnott US Business Office:

[www.arnottsuspension.com](http://www.arnottsuspension.com)

100 Sea Ray Drive  
Merritt Island, FL 32953

**Call:** 800.251.8993

321.868.3016

**Fax:** 321.868.3703

**Email:** [techassistance@arnottinc.com](mailto:techassistance@arnottinc.com)

### Arnott Europe Business Office:

[www.arnotteurope.com](http://www.arnotteurope.com)

Industrieweg 19  
5145 PD, Waalwijk (NL)

**NL Phone:** +31 73 7850 580

**DE Phone:** +31 85 2087 438

**UK Phone:** +44 203 3186 124

**BE Phone:** +32 258 846 90

**ES Phone:** +34 91 901 10 56

**FR Phone:** +32 78 48 46 93

**Email:** [info@arnotteurope.com](mailto:info@arnotteurope.com)



#### HOW HELPFUL WAS THIS MANUAL?

Scan the QR code or click the link below to let us know.

<https://bit.ly/45W6lz2>

#### NEED IMMEDIATE SUPPORT?

We're happy to help! Reach out using the contact information above.